

AVAILABLE > 107,769 SF

2080-2140 Lunt Ave.

ELK GROVE VILLAGE, ILLINOIS



**NEW CONSTRUCTION IN
THE HEART OF O'HARE**

Property Overview

- > Available: 107,769 SF
- > Site Area: 5.82 acres
- > Clear Height: 32'
- > Loading: 29 exterior docks, 3 future docks or trailer parking spaces
- > 2 drive-in doors
- > Sprinklers: ESFR
- > Car Parking: 134 cars
- > State of the art new construction
- > Great O'Hare location with easy access to major expressways
- > Low Cook County 6B taxes
- > Q4 2017 delivery

Contact Us:

MATTHEW J. STAUBER, SIOR

847 698 8236

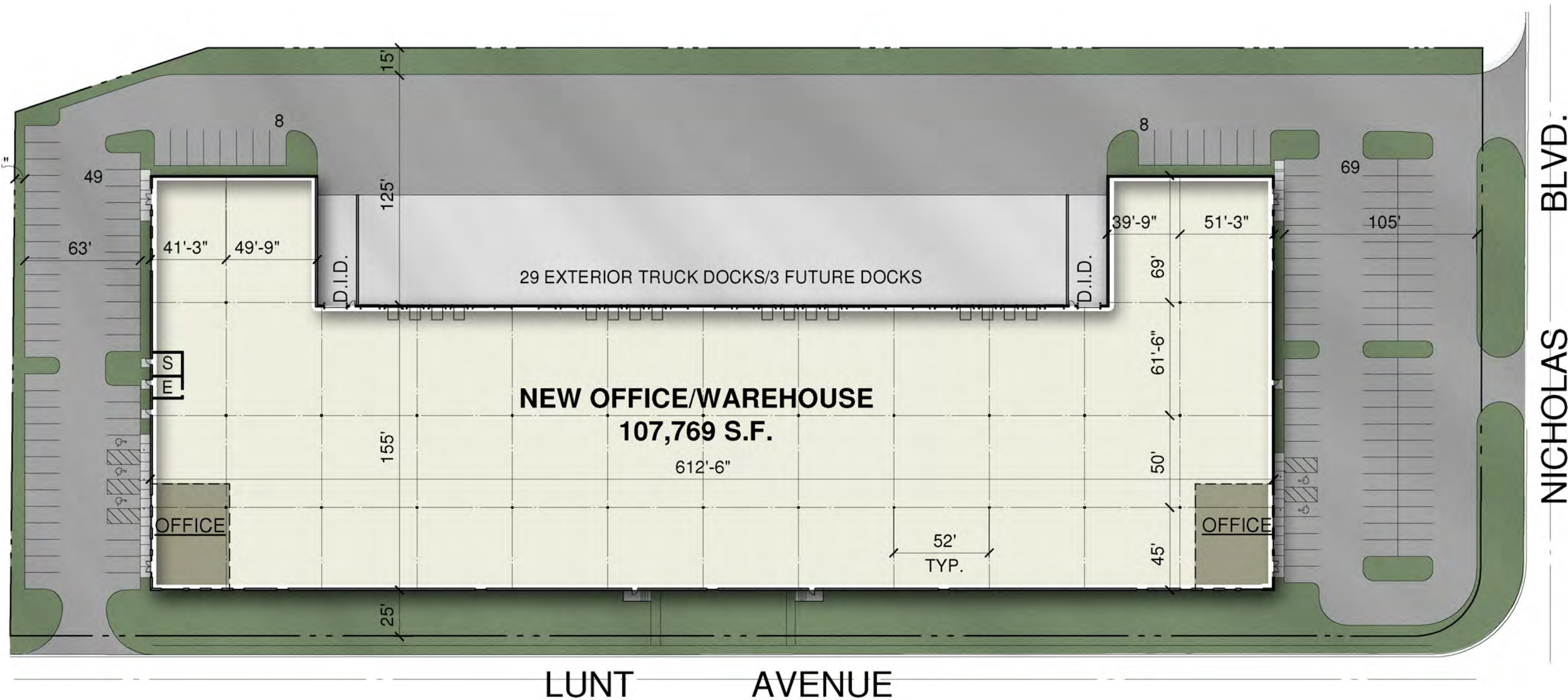
matthew.stauber@colliers.com

COLLIERS INTERNATIONAL
6250 N. River Road, Suite 11-100
Rosemont, IL 60018
www.colliers.com



CROW HOLDINGS CAPITAL
REAL ESTATE

No warranty or representation is made to the accuracy of the foregoing information.
Terms of sale or lease and availability are subject to change or withdrawal without notice.



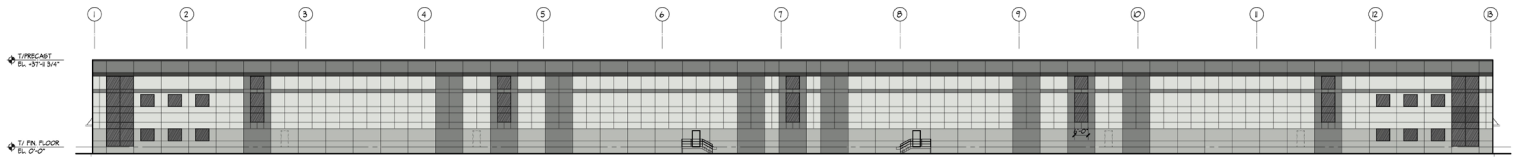
SITE AREA (±5.82 AC.) ± 253,623 S.F.
BUILDING AREA
 TOTAL BUILDING AREA 107,769 S.F.
 CLEAR HEIGHT 32'-0"

PARKING
 CAR PARKING PROVIDED 134 CARS
DRIVE IN OVERHEAD DOORS 2 DOORS
EXTERIOR DOCKS 29 DOCKS
FUTURE DOCKS/TRAILERS 3

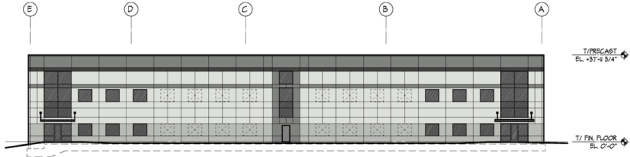
SEEFRIED
 INDUSTRIAL PROPERTIES
 CROW HOLDINGS CAPITAL
 REAL ESTATE



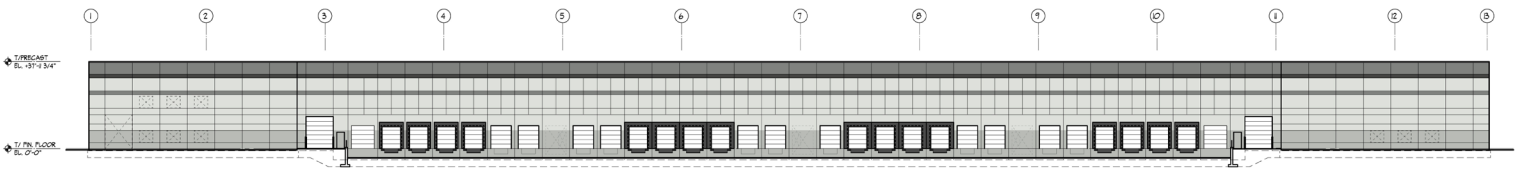
MATTHEW J. STAUBER, SIOR
 847 698 8236
 matthew.stauber@colliers.com



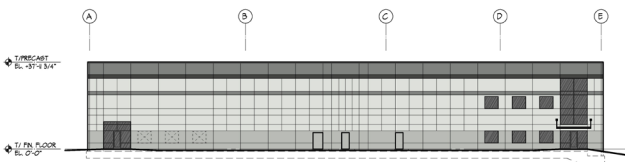
SOUTH ELEVATION
SCALE: 1/4"=1'-0"



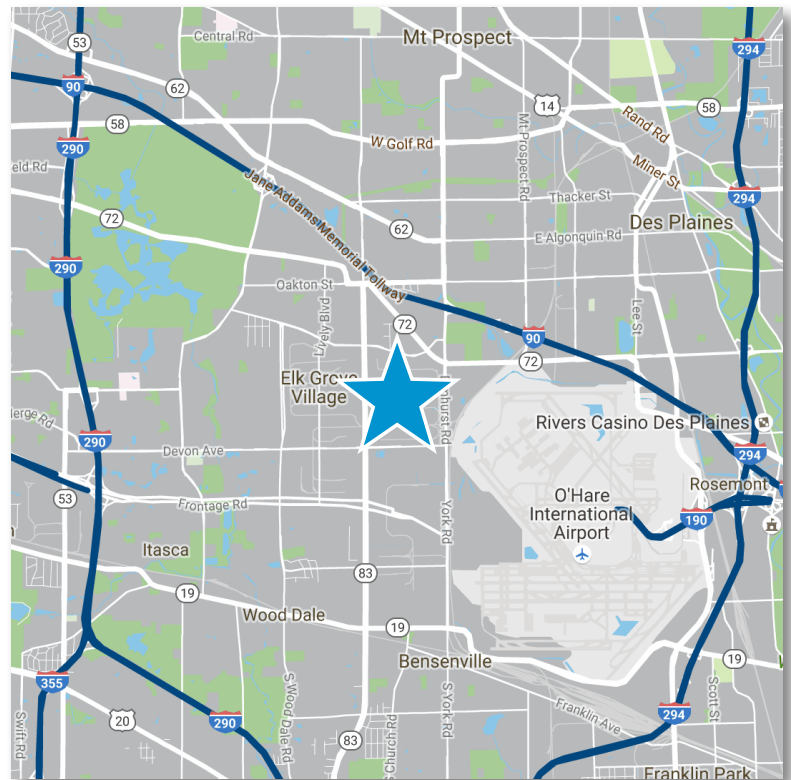
EAST ELEVATION
SCALE: 1/4"=1'-0"



NORTH ELEVATION
SCALE: 1/4"=1'-0"



WEST ELEVATION
SCALE: 1/4"=1'-0"



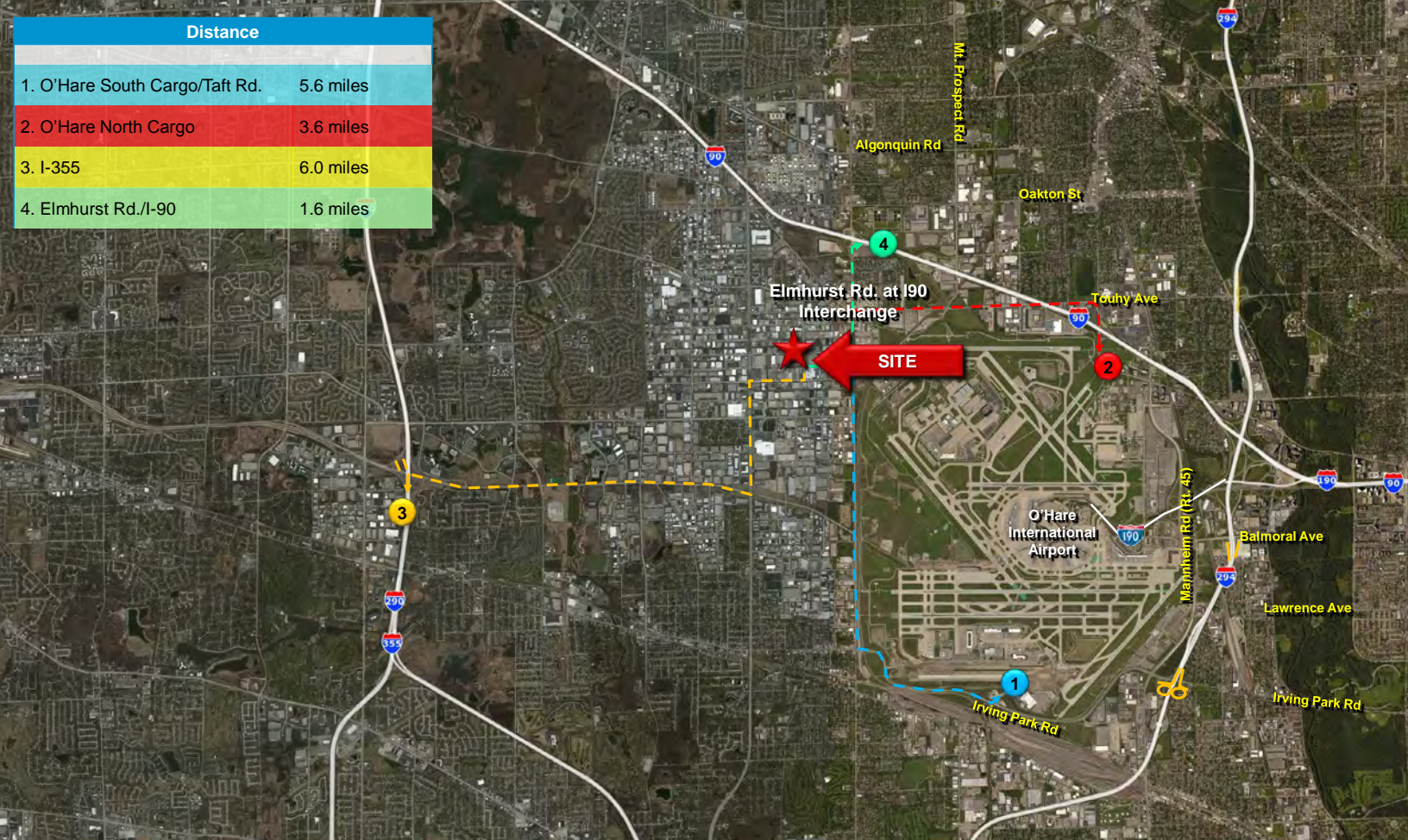
Crow Holdings Capital
REAL ESTATE



MATTHEW J. STAUBER, SIOR
847 698 8236
matthew.stauber@colliers.com

Distance

- 1. O'Hare South Cargo/Taft Rd. 5.6 miles
- 2. O'Hare North Cargo 3.6 miles
- 3. I-355 6.0 miles
- 4. Elmhurst Rd./I-90 1.6 miles



MATTHEW J. STAUBER, SIOR
 847 698 8236
 matthew.stauber@colliers.com