

±424,427 SF

I-10 CITRUS DISTRIBUTION CENTER

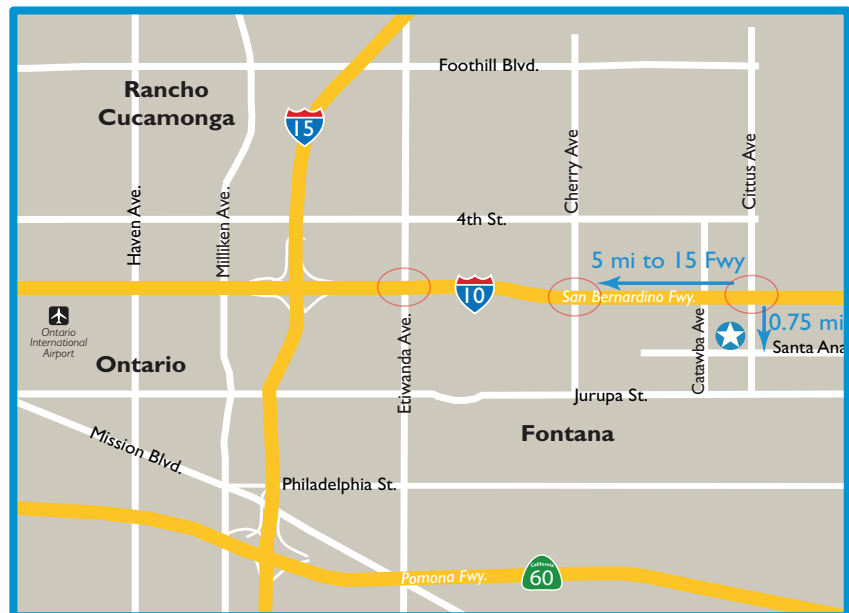
10886 S. CITRUS AVENUE
FONTANA, CALIFORNIA

NOW COMPLETE



BUILDING FEATURES

- › ±4,376 SF Single Story Office Space
- › 52' X 50' Typical Column Spacing
- › 32' Minimum Clear Height
- › ESFR Sprinkler System
- › 185' All-Concrete Secured Yard
- › 53 Dock-High Doors
- › 2 Grade-Level Doors
- › 80 Trailer Parking Stalls
- › Close Proximity to I-10 Freeway (0.75 miles)



Developed By:



Thomas E. Taylor
Sr. Executive Vice President
thomas.taylor@colliers.com
+1 909 612 2614
License No. 00598896

Steven J. Bellitti
Sr. Executive Vice President
steve.bellitti@colliers.com
+1 909 612 2617
License No. 01048797

Josh Hayes
Sr. Vice President
josh.hayes@colliers.com
+1 909 612 2625
License No. 01300731

Summer Coulter
Vice President
summer.coulter@colliers.com
+1 909 612 2628
License No. 01811350



AVAILABLE FOR LEASE
±424,427 SF

10886 CITRUS AVE
FONTANA, CA

For more information
 please contact:

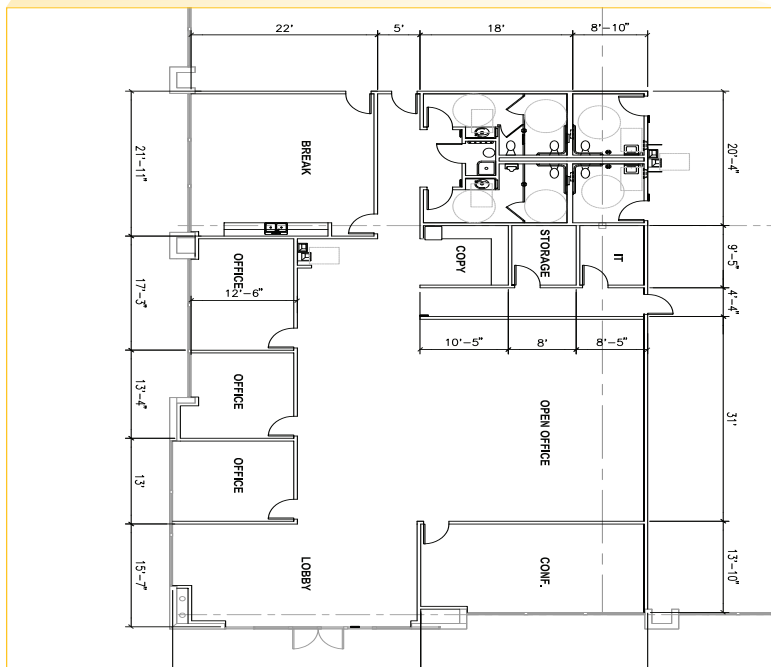
Thomas E. Taylor
Sr. Executive Vice President
 thomas.taylor@colliers.com
 +1 909 612 2614
 License No. 00598896

Steven J. Bellitti
Sr. Executive Vice President
 steve.bellitti@colliers.com
 +1 909 612 2617
 License No. 01048797

Josh Hayes
Sr. Vice President
 josh.hayes@colliers.com
 +1 909 612 2625
 License No. 01300731

Summer Coulter
Vice President
 summer.coulter@colliers.com
 +1 909 612 2628
 License No. 01811350

Colliers International
 2855 E. Guasti Road,
 Suite 401
 Ontario, CA 91761
 colliers.com/greaterlosangeles



Developed By:

